















Saltnuß

Rabenstein

Ilmach

**Provincia Autonoma di Bolzano**



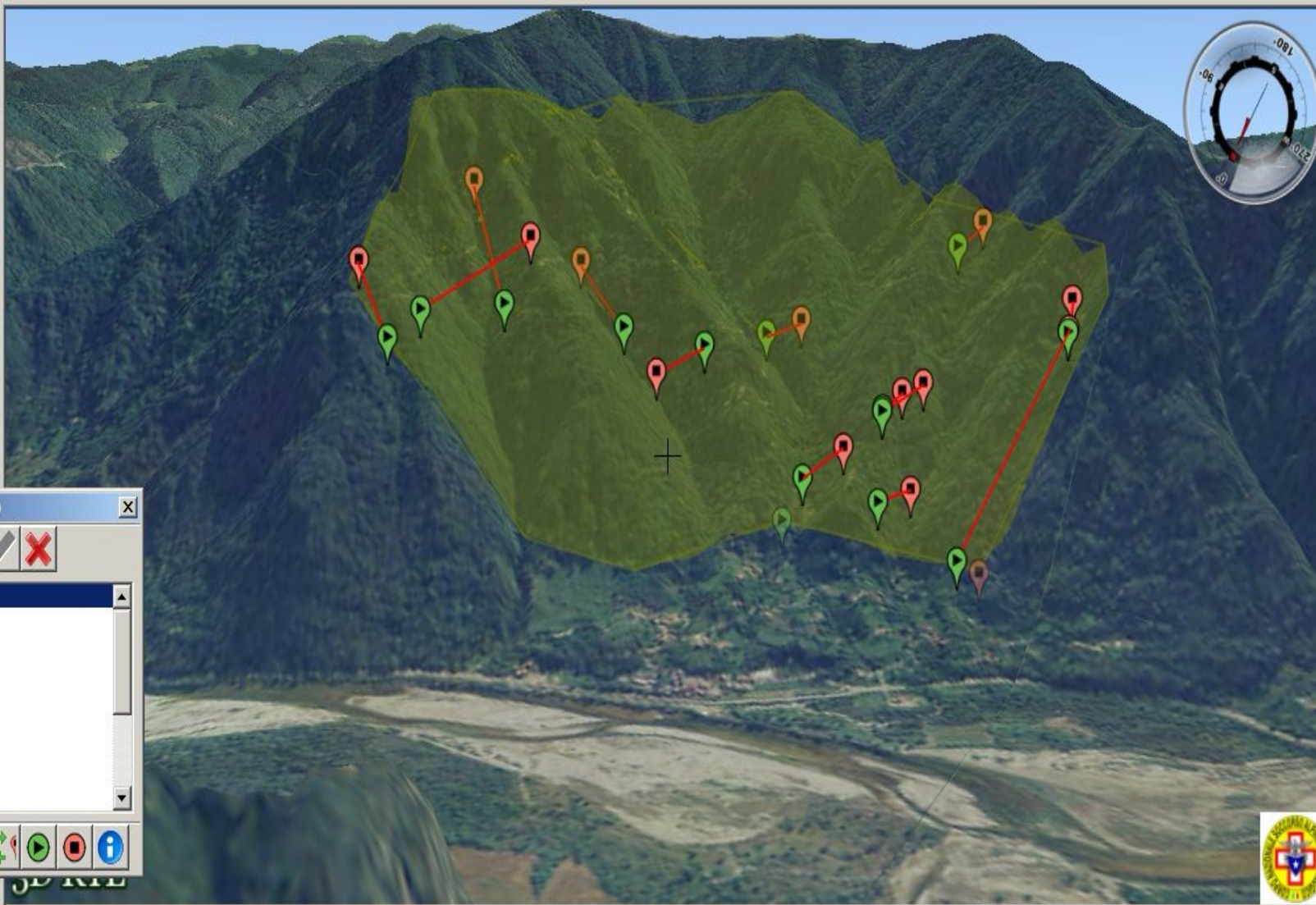


Veneto





- CNSAS - BELLUNO
  - Crosses
  - Locations
  - 1 - TOPOGRAFIA
    - 1a - Topografia CNSAS
      - Fabbricati
      - Idrografia
      - Ostacoli al cammino
      - Viabilità
  - 2 - LIMITI AMMINISTRATIVI
  - 3 - OSTACOLI AL VOLO
  - 4 - ELEMENTI PARTICOLARI
  - 5 - TOPONIMI
  - 6 - RAPPORTINI
  - A - ORTOFOTO
    - Ortofoto
    - Ortofoto (2)
    - Ortofoto (3)
  - B - C.T.R.



Track view 1/15 (1363/1409 Punti)

- Current\_track1 - track 1
- ✓ T023 - track 1
- ✓ T006 - track 1
- ✓ T007\_a - track 1
- ✓ T007\_b - track 1
- ✓ T008 - track 1
- ✓ T009 - track 1
- ✓ T010 - track 1
- ✓ T011 - track 1
- ✓ T012 - track 1

Aggiornamento scena  
 3D RTE Community  
 Help online

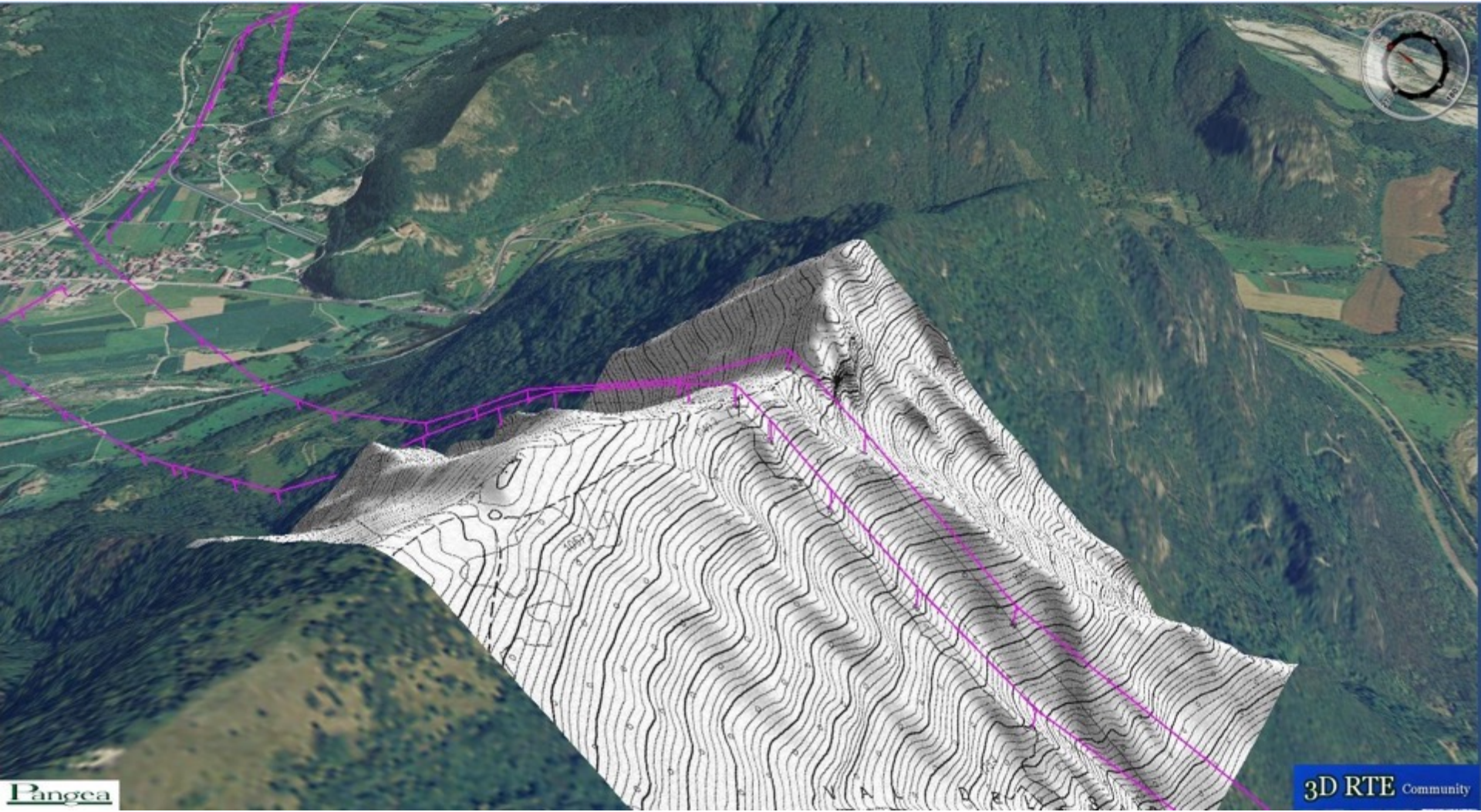
Mouse z = 207  
 x = 729738 Lon = 011°57'57.9" E  
 y = 5096398 Lat = 45°58'57.5" N



Camera zt = 224 z = 941 D = 717 Az = 148 ° N  
 x = 728555 Lon = 011°57'05.2" E  
 y = 5097709 Lat = 45°59'41.4" N  
 Cross = 533.8 m

**Software in uso al C.N.S.A.S. ...**

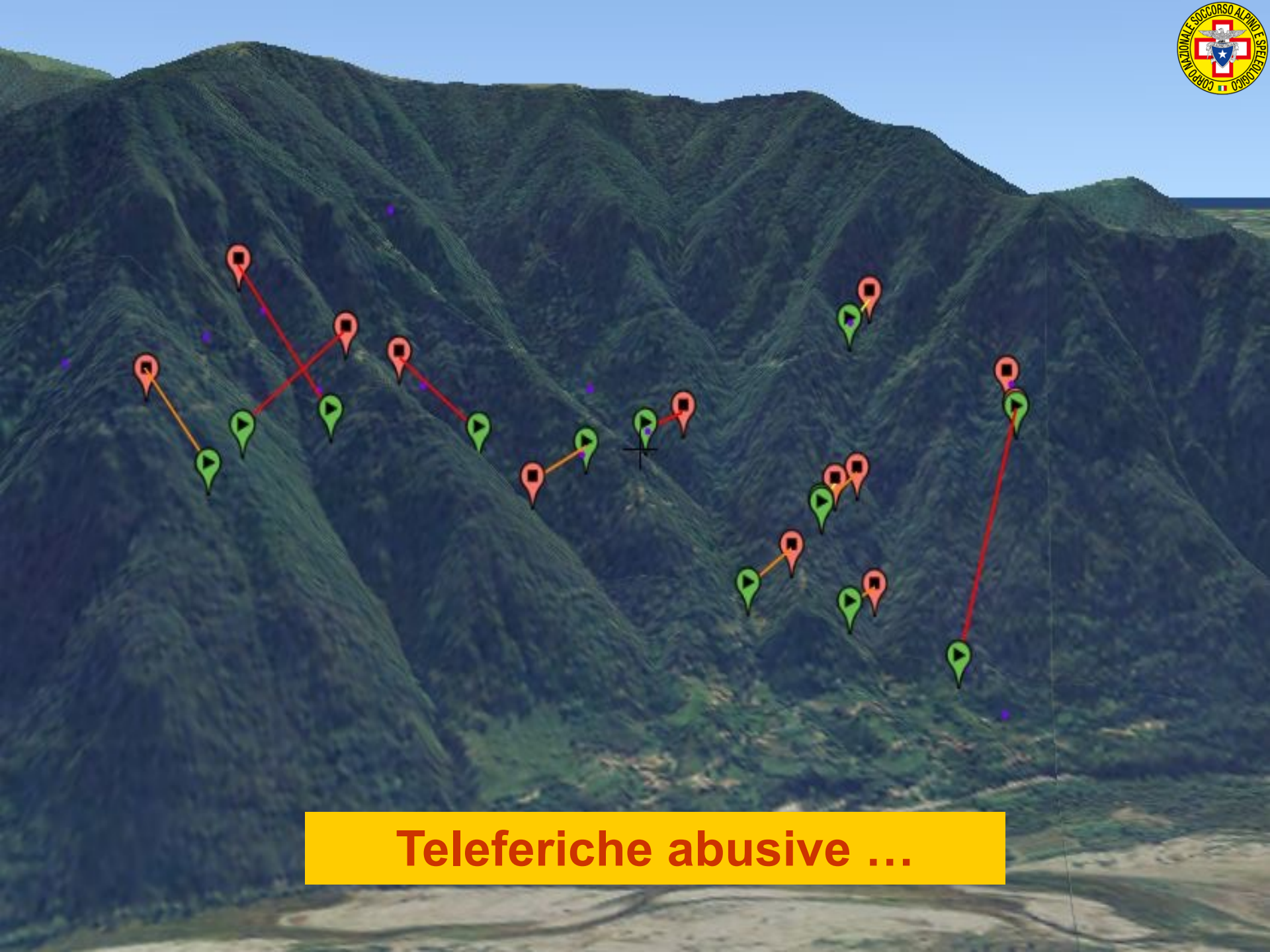












**Teleferiche abusive ...**



